

**Technische Ausstattung / Venue Specs Kranhalle Live - Update 01/2025****PA:**

D&B C4 (2x TOP; 2x SUB)  
1x D&B B2 Bass  
2x KS TIII Top (Centerfill)

**Controlling:**

Allen & Heath AHM16  
L/R or L/R/Sub Input for Guest-Console on Stage or FOH

**Amping:**

2x P1200A Amp with 402 top- & 402 Sub-card  
1x A1 Amp with B2-CO card  
1x KS TIII Amp (Centerfill)

**Stagebox:  
& Mulicores:**

Allen&Heath GX4816  
48 channels send + 16 channels return  
Send via analog Stagebox  
2x 40 Channel Splitbox,  
1x 16 Channel & 2x 8 Channel Subsnakes  
5x CAT 7 S/FTP Lines from FOH to Stage

**FOH:****Mixingdesk:**

Allen&Heath Avantis  
24 Faders, 6 Layers, 2 Touchscreens  
12 Analog and 1 Stereo AES Inputs  
12 Analog and 1 Stereo AES Output  
96 kHz 64 Channel/42 Bus digital mixer  
12 FX Slots, 16 DCAs  
Dante-Card (2 I/O Ports)  
USB Stereo Recording  
BNC World Clock

**MONITOR:****Drumfill:**

2x Martin F15 (15"/1,4")

**Floor:**

4x Martin LE400C (15"/1")

**Amping:**

4x Crest 8001

**MICS:**

1x Shure Beta 58A  
3x Shure SM58  
4x Shure SM57  
1x Shure Beta 57A  
1x Shure Beta 52A

1x Shure Beta 91A  
3x Sennheiser e604  
3x AKG CK391  
6x Palmer pan02 DI

**STAGE:** length: 8m; depth: 4m; height: 0,7m; clearance height: 4,0m  
Aluminium Pipe for Banner: 6m long 3,75m high (height not adjustable)

**LIGHTS:**

Lightconsole: 1x MA Dot2 XLF

Dimmerpack: 2x MA Lighting Digitaldimmer a.12x 2,3 kW via DMX

Patching: 24 dimmerchannels and 40 fixedpower-channels on 96 out

Luminaires: 6x Desisti headlamps with 4-leaf Barndoor 1 kW (Fronttruss)  
4x Strand Profiler 575W (Fronttruss)  
2x 4 Bar Expolite TourLED 50XCR (Dancefloor)  
6x LED Wash Robe Robin 300X (Backtruss)  
6x LED Wash Robe Robin 300X (Sidetruss Front)  
4x Spot Martin ERA 300 Profile LED (Backtruss)  
4x Spot Martin ERA 300 Profiler LED (Dancefloor)  
2x 4 Lite Blinder Martin Rush 1 WW (Fronttruss)  
1x Martin Strobe Atomic (3 KW), controlled by DMX (Fronttruss)  
1x Mirrorball 60cm (Dancefloor)  
4x Cameo Q Spot RGBW (Dancefloor) to mirrorball  
4x Expolite TourCYC 540 RGBW (Dancefloor)  
1x Smokefactory TC 3, fogmachine (on Stage)  
1x Smokefactory Tourhazer II (on Stage)  
12x ADJ Ultra Hex Bar LED (Atmo ceiling illumination)

**PROJECTION-/ VIDEOTECHNICS:**

1x Beamer Optoma EH416e 4200 ANSI Lumen (Stage)  
2x Beamer Optoma EH400 4000 ANSI Lumen (Side)

Signals: HDMI via HDBaseT to all 3 Beamer

Signals can be send from FOH or from Stage

1x rollable Screen (5,00m wide x 3,12m high)  
in the back and center of the stage

2x rollable Screens (2,95m wide x 2,50m high)  
at the sides of the venue

**POWER:**

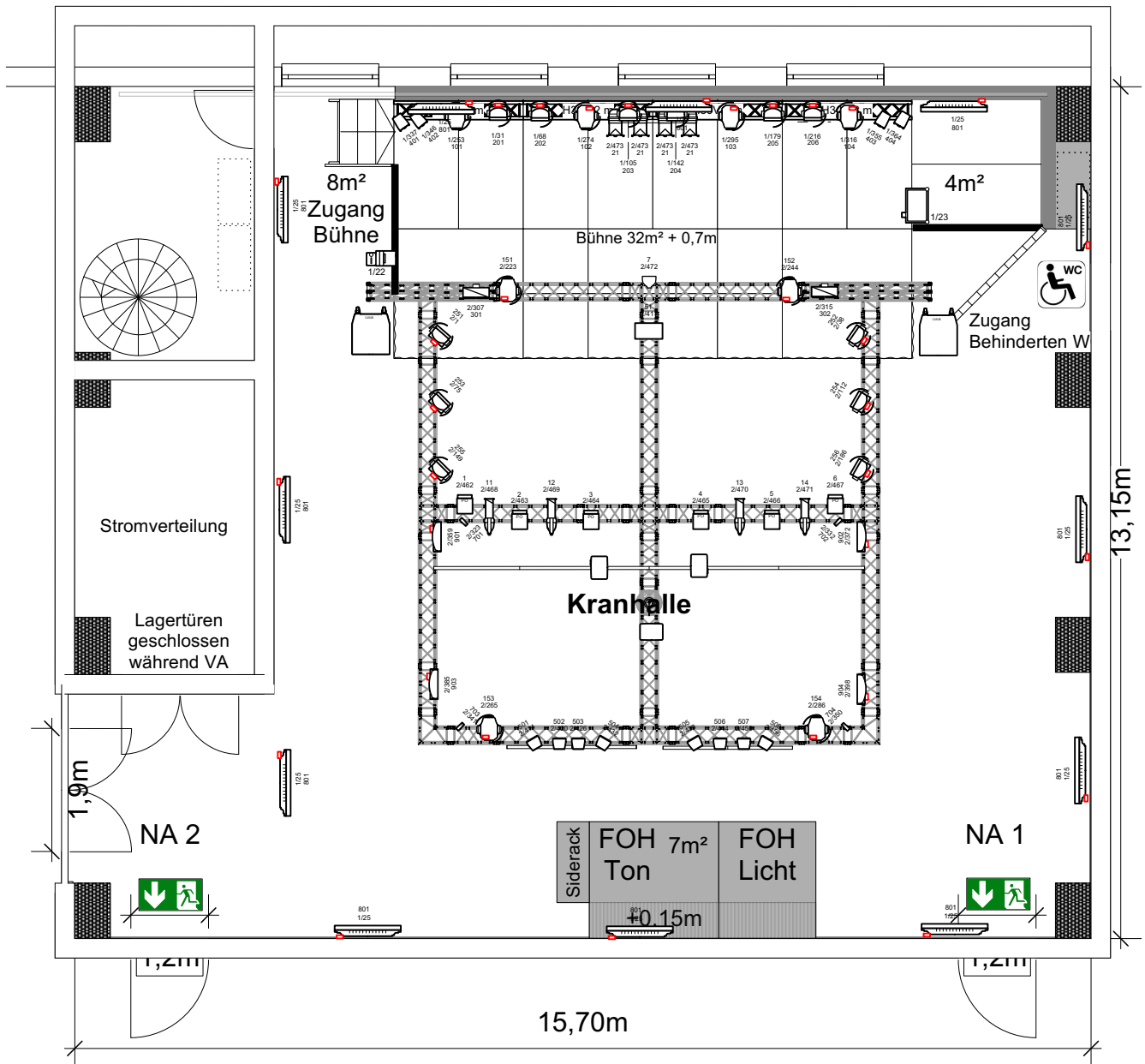
Sound: PA 1x CEE 32A, with own RCD  
Backline 2x 16A, with own RCD,

Light: 1x CEE 63 A, with own RCD  
1x CEE 32 A, with own RCD  
1x CEE 32A, with own RCD (on stage)

Other: 2x CEE 16 A three phase for not dimmable load; with own RCD

On any further question, please contact **Feierwerk** Technik

Hansastr. 39 | D-81373 München | Fon 089/72488 - 142 | Fax 089/72488 - 109 | Mail: [technik@feierwerk.de](mailto:technik@feierwerk.de)



Martin Era 300 Profile (21 CH)

Robe Robin 300X (Mode 1)

Expolite Tourbar 64 (Mode 64Ch)

ADJ Ultra Hex Bar (6CH - RGBWAUV)

▫ Pinspot LED RGBW (Mode 9CH)

▫ Expolite TourLED 50XRC (Mode AR2.S)

▫ Expolite TourLED MC60 (Mode SSP)

▫ Desisti PC 1KW P.O.

Strand Profiler 575W

PAR 64 Raylight 500W

Expolite Tourcyc 540 (Mode 13CH)

Martin Rush Blind1 WW (Mode 8CH)

Martin Atomic Strobe (Mode 3Ch)

Beamer

Fog: Smokefactory DATA 2

Multipar 575W

Tourhazer II

Grundfläche Kranhalle: 206,45m<sup>2</sup>

Nettofläche Kranhalle: 118,94m<sup>2</sup>

| Device                   | DMX Channel | Mode          | Offset #   | Hotpatch | Offset Plugbox |
|--------------------------|-------------|---------------|------------|----------|----------------|
| Nebel                    | 1.022       | 1CH           | 75         | S4       | F10            |
| Haze                     | 1.023       | 2CH           | 73         | S5       | F10            |
| Atmo ADJ Hex Bar (12Pcs) | 1.025       | 6CH (RGBWAUV) | 74; 81; 82 |          | F10 / F11      |
| Robin 300X               | 1.031       | Mode1         | 91         | 31       | D16            |
| Robin 300X               | 1.068       | Mode1         | 92         | 32       | D16            |
| Robin 300X               | 1.105       | Mode1         | 93         | 33       | D16            |
| Robin 300X               | 1.142       | Mode1         | 93         | 33       | D16            |
| Robin 300X               | 1.179       | Mode1         | 92         | 32       | D16            |
| Robin 300X               | 1.216       | Mode1         | 91         | 31       | D16            |
| Marin Era 300 Profile    | 1.253       | 21CH          | 94         | 28       | D16            |
| Marin Era 300 Profile    | 1.274       | 21CH          | 95         | 29       | D16            |
| Marin Era 300 Profile    | 1.295       | 21CH          | 95         | 29       | D16            |
| Marin Era 300 Profile    | 1.316       | 21CH          | 94         | 28       | D16            |
| Expolite TourPar MC 180  | 1.337       | Mode SSP      | 71         | 26       | D10            |
| Expolite TourPar MC 180  | 1.346       | Mode SSP      | 68         | 26       | D10            |
| Expolite TourPar MC 180  | 1.355       | Mode SSP      | 70         | 27       | D10            |
| Expolite TourPar MC 180  | 1.364       | Mode SSP      | 72         | 27       | D10            |

| Device                  | DMX Channel | Mode        | Offset #         | Offset Plugbox | Hotpatch Out | Description |
|-------------------------|-------------|-------------|------------------|----------------|--------------|-------------|
| Robin 300X              | 2.001       | Mode1       | 1                | D1             | 35           | UV003 F11   |
| Robin 300X              | 2.038       | Mode1       | 13               | D3             | 35           | UV003 F11   |
| Robin 300X              | 2.075       | Mode1       | 2                | D1             | 36           | UV003 F12   |
| Robin 300X              | 2.112       | Mode1       | 14               | D3             | 36           | UV003 F12   |
| Robin 300X              | 2.149       | Mode1       | 3                | D1             | 25           | UV003 F1    |
| Robin 300X              | 2.186       | Mode1       | 15               | D3             | 25           | UV003 F1    |
| Marin Era 300 Profile   | 2.223       | 21 Ch       | 6                | D1             | 34           | UV003 F8    |
| Marin Era 300 Profile   | 2.244       | 21 Ch       | 18               | D3             | 34           | UV003 F8    |
| Marin Era 300 Profile   | 2.265       | 21 Ch       | 54               | D9             | 30           | UV003 F10   |
| Marin Era 300 Profile   | 2.286       | 21 Ch       | 42               | D7             | 30           | UV003 F10   |
| Martin Rush Bliner 1WW  | 2.307       | 8 Ch        | 2                | F1             | S2           |             |
| Martin Rush Bliner 1WW  | 2.315       | 8 Ch        | 23               | F3             | S2           |             |
| Cameo Pinspot           | 2.323       | 9 Ch        | 43               | F6             | S3           |             |
| Cameo Pinspot           | 2.332       | 9 Ch        | 53               | F7             | S3           |             |
| Cameo Pinspot           | 2.341       | 9 Ch        | 27               | F4             | S3           |             |
| Cameo Pinspot           | 2.350       | 9 Ch        | 65               | F9             | S3           |             |
| Expolite Tourcyc 540    | 2.359       | 13 Ch       | 25               | F4             |              | HV1         |
| Expolite Tourcyc 540    | 2.372       | 13 Ch       | 56               | F7             |              | HV1         |
| Expolite Tourcyc 540    | 2.385       | 13 Ch       | 72               | F9             |              | HV1         |
| Expolite Tourcyc 540    | 2.398       | 13 Ch       | 41               | F6             |              | HV1         |
| Martin Atomic           | 2.411       | 3 Ch        | Direkt Off Stage |                |              | HV1         |
| Expolite TourLED 50 XCR | 2.414       | AR2.S (6CH) | 38               | D7             | S11          |             |
| Expolite TourLED 50 XCR | 2.420       | AR2.S (6CH) | 39               | D7             | S11          |             |
| Expolite TourLED 50 XCR | 2.426       | AR2.S (6CH) | 40               | D7             | S12          |             |
| Expolite TourLED 50 XCR | 2.432       | AR2.S (6CH) | 41               | D7             | S12          |             |
| Expolite TourLED 50 XCR | 2.438       | AR2.S (6CH) | 50               | D9             | S12          |             |
| Expolite TourLED 50 XCR | 2.444       | AR2.S (6CH) | 51               | D9             | S12          |             |
| Expolite TourLED 50 XCR | 2.450       | AR2.S (6CH) | 52               | D9             | S11          |             |
| Expolite TourLED 50 XCR | 2.456       | AR2.S (6CH) | 53               | D9             | S11          |             |
| Dimmer - Front PC 1     | 2.462       |             | 25               | D5             | 1            |             |
| Dimmer - Front PC 2     | 2.463       |             | 26               | D5             | 2            |             |
| Dimmer - Front PC 3     | 2.464       |             | 27               | D5             | 3            |             |
| Dimmer - Front PC 4     | 2.465       |             | 28               | D5             | 4            |             |
| Dimmer - Front PC 5     | 2.466       |             | 29               | D5             | 5            |             |
| Dimmer - Front PC 6     | 2.467       |             | 30               | D5             | 6            |             |
| Dimmer - Profiler 1     | 2.468       |             | 23               | D4             | 7            |             |
| Dimmer - Profiler 2     | 2.469       |             | 24               | D4             | 8            |             |
| Dimmer - Profiler 3     | 2.470       |             | 31               | D6             | 9            |             |
| Dimmer - Profiler 4     | 2.471       |             | 32               | D6             | 10           |             |
| Dimmer - Drummer        | 2.472       |             | 12               | D2             | 11           |             |
| Dimmer - Finger         | 2.473       |             | 69               | D10            | 12           |             |
| Dimmer - Spare          | 2.474       |             | 79               | D12            | 13           |             |
| Dimmer - Spare          | 2.475       |             | 80               | D12            | 14           |             |
| Dimmer - Spare          | 2.476       |             | 81               | D12            | 15           |             |
| Dimmer - Spare          | 2.477       |             | 82               | D12            | 16           |             |
| Dimmer - Spare          | 2.478       |             |                  |                | 17           |             |
| Dimmer - Spare          | 2.479       |             |                  |                | 18           |             |
| Dimmer - Spare          | 2.480       |             |                  |                | 19           |             |
| Dimmer - Spare          | 2.481       |             |                  |                | 20           |             |
| Dimmer - Spare          | 2.482       |             |                  |                | 21           |             |
| Dimmer - Spare          | 2.483       |             |                  |                | 22           |             |
| Dimmer - Spare          | 2.484       |             |                  |                | 23           |             |
| Dimmer - Spare          | 2.485       |             |                  |                | 24           |             |

## Feierwerk Kranhalle Fixture ID

|           |                     |
|-----------|---------------------|
| 1 - 6     | Front PC            |
| 11 - 14   | Profiler            |
| 21        | Finger (ACL)        |
| 51        | Strobe              |
| 61        | Haze                |
| 71        | Fog                 |
| 101 - 104 | Spot Stage          |
| 151 - 154 | Spot Dancefloor     |
| 201 - 206 | Wash Backtruss      |
| 251 - 256 | Wash Fronttruss     |
| 301 - 302 | Blinder             |
| 401 - 404 | Zoom Par Backtruss  |
| 501 - 508 | LED Par Dancefloor  |
| 601 - 604 | LED Tourbar Stage   |
| 701 - 704 | Pinspots Mirrorball |
| 801       | Atmo                |
| 901 - 904 | Fluter DF           |